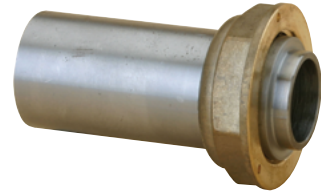
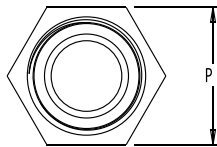
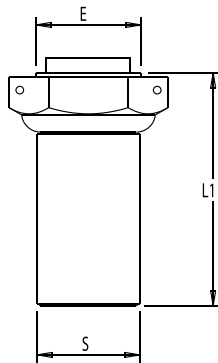


BP

RÉSEAU
ON
GPL

RACCORD 2 PIÈCES FEMELLE À JPC À SOUDER SUR ACIER










CARACTÉRISTIQUES TECHNIQUES

Normes : NF E 29-532

Température : -20°C à +60°C

Divers : Livré avec joint aramide pour sortie de compteur

| CALIBRE | ENTRÉE FEMELLE ÉCROU (E) | SORTIE AC (S) | RACCORDEMENT AU COMPTEUR TYPE | L1 | P | NF | RÉF. |
|---------|--------------------------|---------------|-------------------------------|----|----|--|----------|
| 20 | JPC 20 | Ac Ø 26,9 | G4 | 57 | 36 |  | 0501-013 |
| 20 | JPC 20 | Ac Ø 33,7 | G4 | 57 | 36 |  | 0501-015 |
| 32 | JPC 32 | Ac Ø 33,7 | G6/G10 | 55 | 50 |  | 0501-017 |
| 32 | JPC 32 | Ac Ø 42,4 | G6/G10 | 55 | 50 |  | 0501-019 |
| 40 | JPC 40 | Ac Ø 48,3 | | 63 | 65 |  | 0501-022 |
| 40/50 | JPC 40 | Ac Ø 60,3 | | 70 | 65 |  | 0501-023 |
| 50 | JPC 50 | Ac Ø 60,3 | G16/G25 | 61 | 70 |  | 0501-025 |